

The St Johns County Council on Aging operates the Sunshine Bus system through a contract with the St Johns County Board of County Commissioners.

We are pleased to announce the following enhancement of the existing Teal Line. The Teal Line currently serves part of the rural area of St Johns County by providing a connection from Flagler Estates, Hastings and other rural areas along SR 207 with destinations along US 1 from Lewis Point to the Government Center.

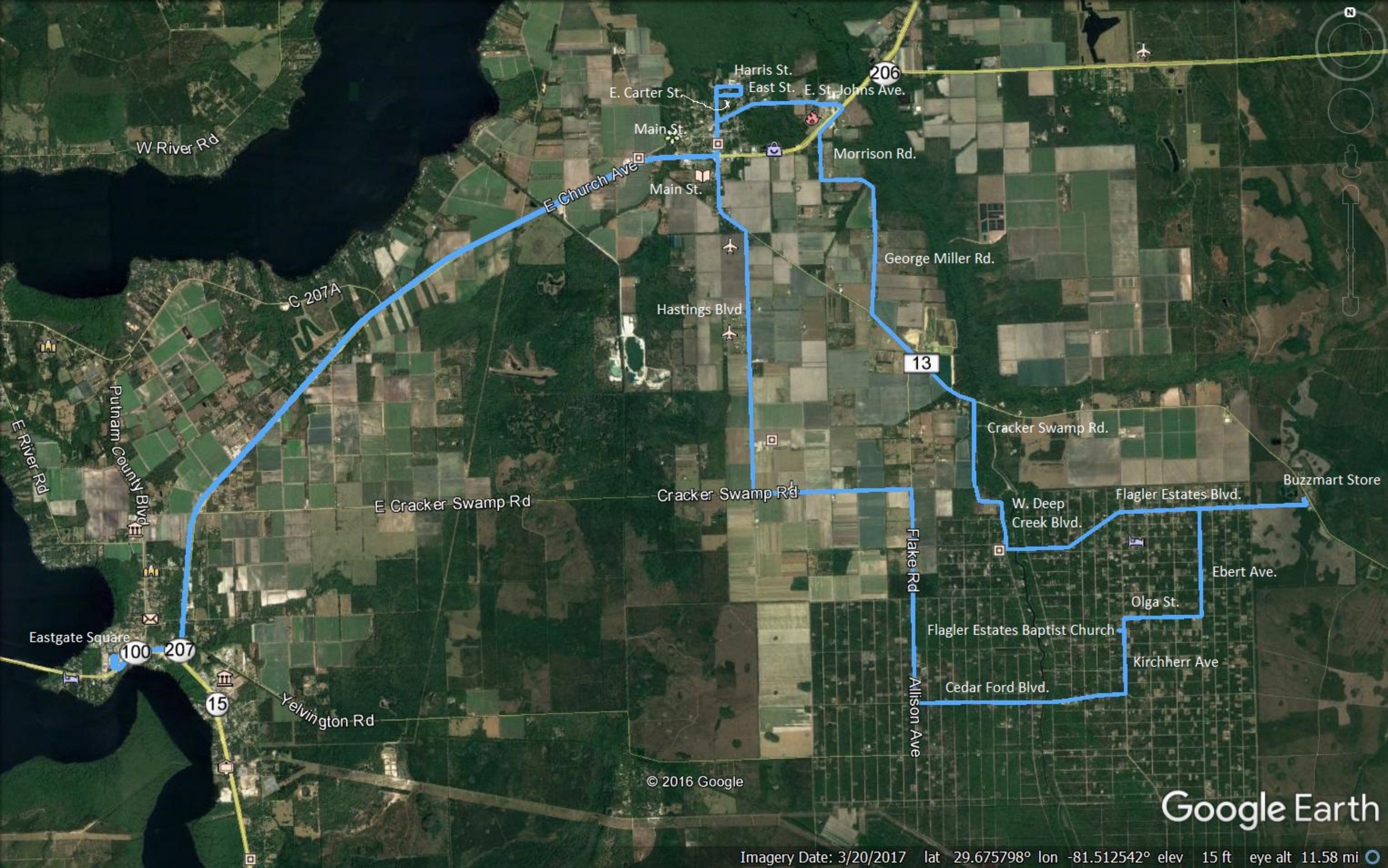
To enhance rural service we are splitting the Teal Line into two routes and creating a new route called the Hastings Circulator. This route will expand service throughout Flagler Estates, additional rural areas in the Hastings area and make a connection with Putnam County's transit service at Eastgate Plaza on US 17 in East Palatka.

By splitting the coverage between the Teal Line and Hastings Circulator the rural area service will be greatly improved.

The Teal Line will run from 5:30 am to 7:05 pm Monday through Saturday with 6 each outbound and inbound runs.

The Hastings Circulator will run from 5:30 am to 7:25 pm Monday through Saturday, making 8 complete circuits throughout each day.

New service will start on June 1, 2017. Schedules and route maps are available at WWW.COASJC.com/transportation, at the Hastings Library or on the bus.



© 2016 Google

Google Earth

Imagery Date: 3/20/2017 lat 29.675798° lon -81.512542° elev 15 ft eye alt 11.58 mi

